



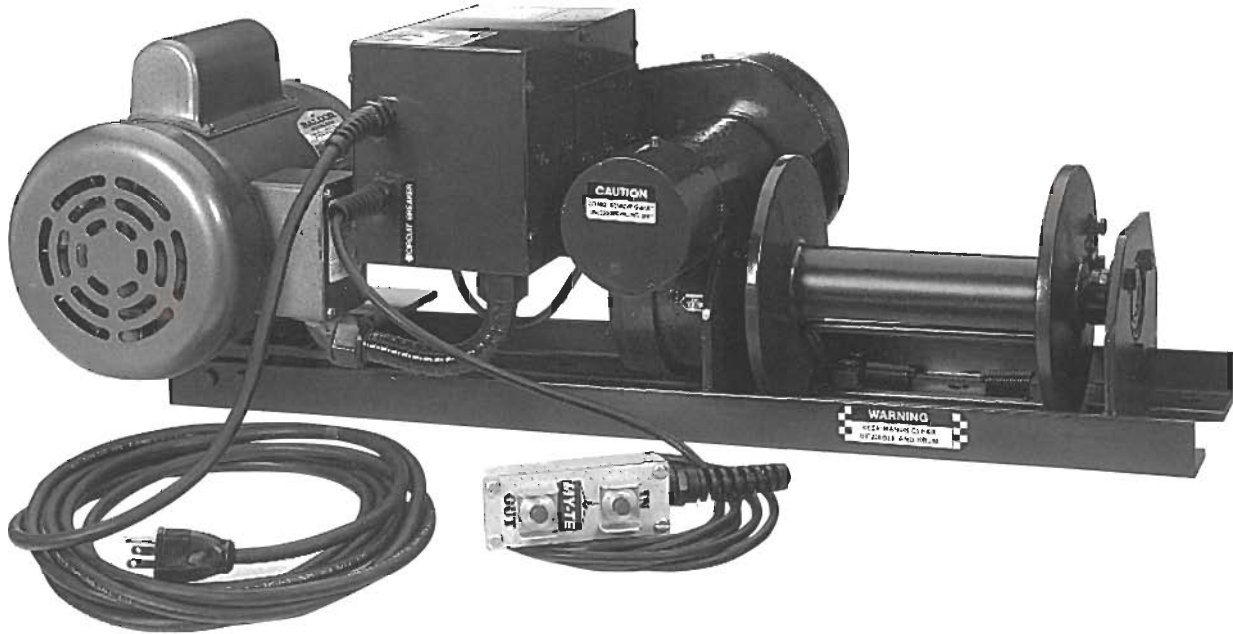
MODEL

510/520

V E R S A T I L E S E R I E S

The Versatile Electric Winch-Hoist

1,500 lb Single-Line or 3,000 lb Double-Line Lift



Model 520 shown

APPLICATIONS

ALL PURPOSE LIFTING OR PULLING

LONGER DUTY CYCLE REQUIREMENTS

JOB'S NEEDING CONSTANT SPEED
LIFTING OR LOWERING

SPECIAL SPEED APPLICATIONS

COMMERCIAL LOW-NOISE ENVIRONMENTS

FEATURES

- Worm gear reduction for positive load holding
- Electromagnetic load brake for instant stopping
- Rugged construction
- Low voltage 10 ft pendant control
- Full power reversible
- 50% duty cycle motor
- Cable tensioner for better cable tracking



MODEL

510/520

VERSATILE SERIES

SPECIFICATIONS

Construction Features:

- Heavy-duty angle base drilled for six (6) 1/2" bolts (9/16" mounting holes) with no welding required
- Fully sealed aluminum housings, with precision-cut gears, run in an oil bath
- Stress-proof drum shaft
- Frictionless bearings

Gear System:

- 84:1 total reduction
- 30:1 worm gear reduction
- 28:10 chain reduction from motor to worm hardened steel worm and forged bronze worm gear holds load in position when stopped

Power:

- 115 Volt, single phase, 60 Hz, 1.5 HP motor (Model 520)*
- 115 Volt, single phase, 60 Hz, 3/4 HP motor (Model 510)
- 14 amp – No-load
- 17 amp – Full-load

* Dedicated 30 amp power line required to operate Model 520.

Speeds:

RPM does not vary from no-load to full-load use. Line speed ranges from 12 FPM, first layer, to 17 FPM, third layer.

Duty Cycle:

- 50% – 30 min/hour when operating at full load

Drum Storage:

- 1/8 – 1,000 ft
- 1/4 – 250 ft
- 3/16 – 450 ft
- 5/16 – 150 ft

For best results, use the minimum amount of cable required for application plus four safety turns around the drum. Cable sold separately. Length and size must be specified at time of order.

Lifting Capacity:

Model 520

- 1,500 lbs – 1-2 layers of cable (39 ft of 1/4" cable)
- 1,275 lbs – 3 layers of cable (65 ft of 1/4" cable)
- 900 lbs – full drum of cable (250 ft of 1/4" cable)

Pulling Capacity:

Model 520

- 10% (6°): 10,000 lbs
- 20% (11°): 5,000 lbs
- 40% (22°): 2,600 lbs
- 60% (31°): 1,900 lbs
- 80% (39°): 1,600 lbs
- 100% (45°): 1,400 lbs

My-te winch-hoists are rated for what they will vertically lift. Above data is based on the total load that may be pulled, single line, up a given incline. All capacities are reduced 20% to allow for minimum friction in pull.

Cable Strength:

- 5-to-1 recommended safety factor
- Top-quality galvanized cable available in the following breaking strengths:
 - 1/8 – 2,000 lbs
 - 1/4 – 7,000 lbs
 - 3/16 – 4,200 lbs
 - 5/16 – 9,800 lbs

Dimensions: (W x H x L")

Model 510: 13" x 11" x 32"

Model 520: 13" x 11" x 32"

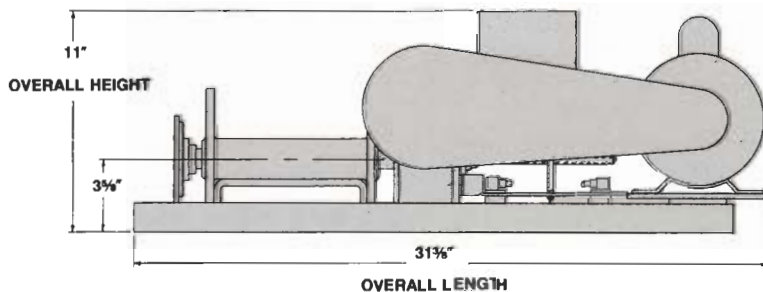
Shipping Weight: 115 lbs

Factory-Installed Options:

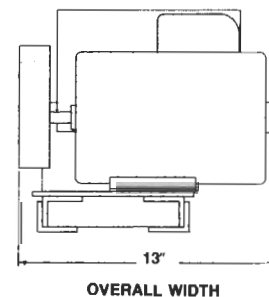
- 230 Volt
- Chain Reduction Modification
- Alternate Drums
- Limit Switch
- All Weather Protection
- 230 Volt – 3 Phase

Note: For additional information on other available factory-installed options and accessories, see catalog sheets 31 and 33.

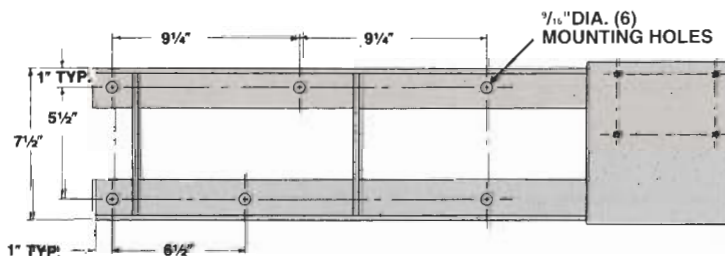
FRONT VIEW



SIDE VIEW



TOP VIEW (FRAME ONLY)



My-te can even custom design winch-hoists for your special needs. For applications assistance, including the specification of a My-te winch-hoist to meet your requirements, see your My-te distributor or call My-te Products, Inc.

All My-te winches and hoists are designed for material handling usage only.

