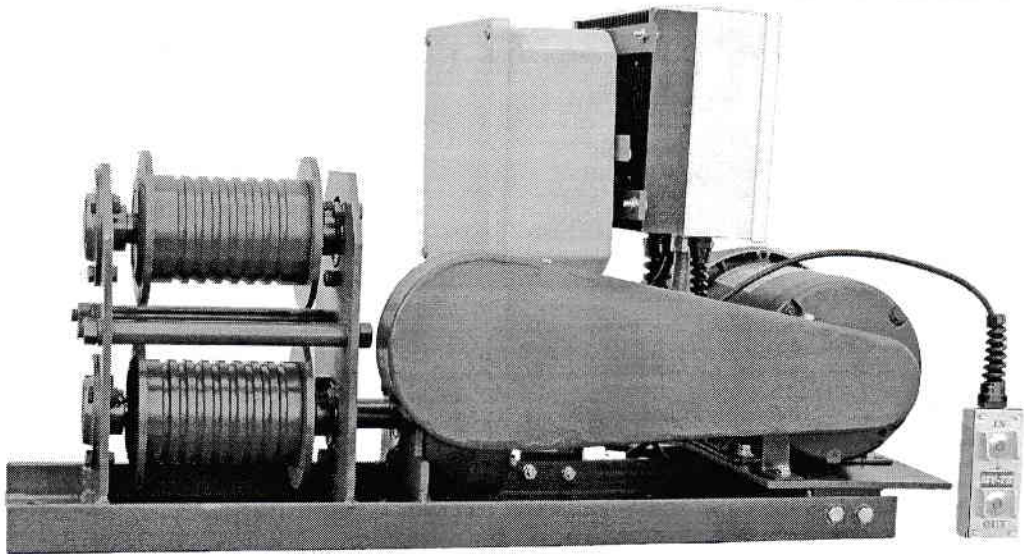


MODEL

LD520

VERSATILE SERIES



The Versatile Electric Cable Loop Drive

Three Phase Model Shown

Applications

- **For Rolling Loads up to 30,000 Lbs.**
- **Move Carts In and Out of Production Areas**
- **Pull Trailers Through Assembly Stations**
- **Open & Close Doors**
- **Pull Tarps or Covers over Tanks/Pits**

Features

- **Worm Gear Reduction for Positive Load Holding**
- **Industrial Grade TEFC Brake Motor**
- **Single Phase or Three Phase**
- **Grooved Drums for 1/4" Wire Rope**
- **Pendant Control**
- **Several Available Options**
- **Programmable Machine Drive Control**

LD520

VERSATILE SERIES

Specifications

Construction Features

- Heavy-duty angle base drilled for six 1/2" mounting bolts.
- Installation requires no welding
- Fully sealed aluminum gear housing with precision-cut gears running in an oil bath
- Stressproof drum shafts
- Frictionless bearings.

Shipping Weight

- 270 Lb.

Duty Cycle

- 50%-30 Minutes/hour when operating at full load

Gear System

- 84:1 Total Reduction
- 30:1 Worm Gear Reduction
- 28:10 Chain & Sprocket Reduction
- Hardened steel worm and forged bronze worm gear hold load in position when stopped.

Line Speed

- 22 fpm
- 20 rpm

Power

- Single Phase Model: 115V/230V Single Phase, 60 Hz, 1.5 HP, TEFC Brake Motor, 1725 RPM, 115V: 14 Amp No Load, 17 Amp Full Load; 230V: 7 Amp No Load, 9 Amp Full Load

Note: Dedicated 30 amp service recommended for 115V Model.

- Three Phase Model: 208, 230/460 Three Phase, 60 Hz 1.5 HP, TEFC Brake Motor, 1725 RPM, 1 Amp No Load, 4.5 Amp Full Load
- Low Voltage Pendant on 10' Cord—Standard Equipment

Pulling Capacity

- 30,000 Rolling load capacity
- 1000 Lb. Line pull
- Rolling load capacity is dependent on floor surface and wheel/caster condition.

Controls

- Single Phase Models provided with single speed contactor type control panel.
- Three Phase Models provided with programmable machine drive type control

Cable Drums

- 2 Welded steel cable drums grooved for 1/4" cable
- Lower drum is gear driven.
- Upper drum is not powered.

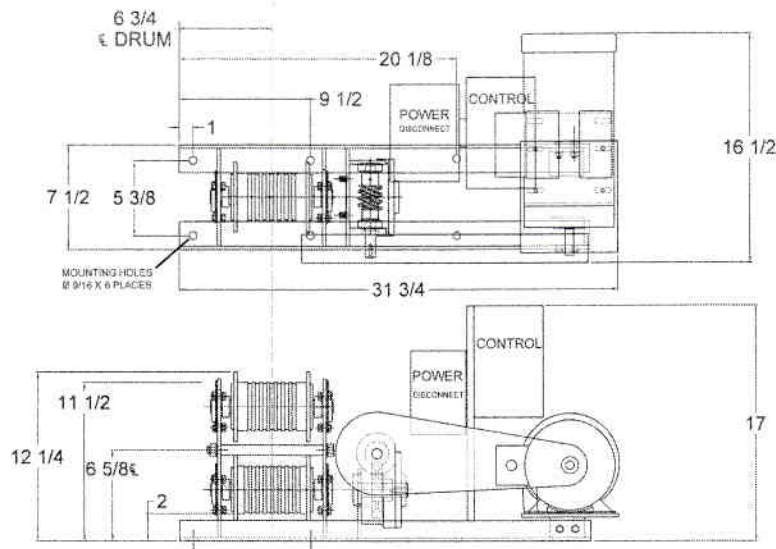
Cable Strength

- Recommended 1/4" diameter cable has 7000 Lb. breaking strength. Safe Working Load: 1400 Lb. line pull

Available Options

- 230V AC Single Phase
- 208, 230/460 Three Phase
- Variable Speed Drive
- Radio Remote Control
- Alternate Rope Drums—Divided, Grooved, Expanded and more
- Adjustable Limit Switches

All My-te Winch-Hoists are designed for material handling only.



My-te will custom design its products for specific applications and offers a diverse line of specialized winch-hoists. My-te also supplies wire rope, hooks, slings, sheave wheels and other hardware for complete ready to operate winch-hoist assemblies.