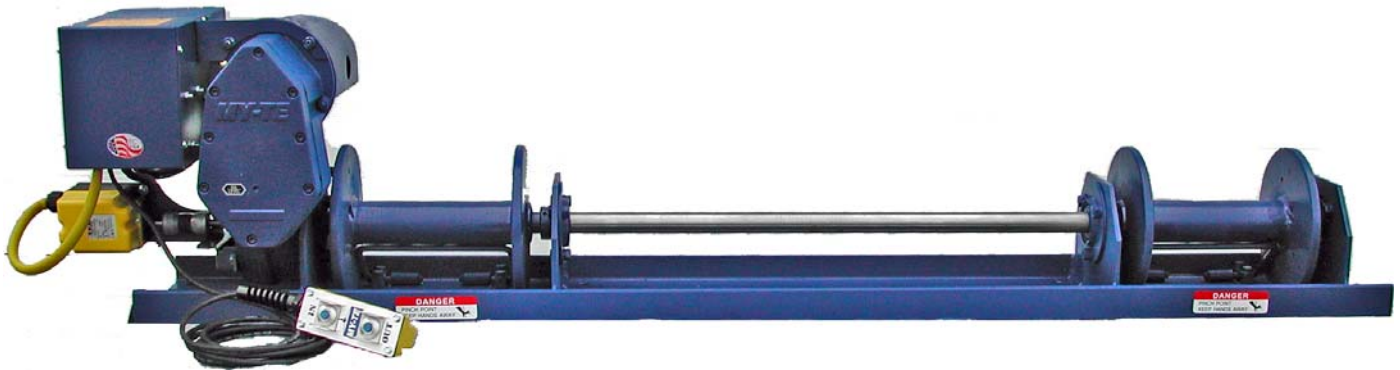


Double Drum Winch-Hoist

1,000 Lb. Single Line Lift or 2,000 Lb. Double Line Lift



Model 600AB, Part # 742061 Standard
Upright Mount Shown

Applications

Hoisting Scoreboards

Raise & Lower Drawbridges

Hoist & Suspend Speakers &

Lighting Grids

Hoisting Signs & Banners

Features

- End Drive Double Drum Winch-Hoist
- Complete Frame Support Over Entire Shaft Length
- Drum to Drum Dimension Built to Your Requirements – Up to 18'
- My-te's Trifecta Braking System: Self-Locking Worm and Worm Gear, Enhanced Dynamic Braking, Brake Motor
- Low Voltage Control
- Rugged and compact

The model 600AB is a special order winch-hoist built to your requirements. Prior to production, My-te will provide drawings for customer approval. Once production begins, the order may not be cancelled. In addition, the winch-hoist is not returnable. My-te's standard warranty policy applies. See terms of sale for more information.

600AB

Construction Features

- Heavy duty angle base drilled for 1/2" mounting bolts. No welding required
- Fully sealed aluminum gear housings with precision-cut gears running in an oil bath
- Stressproof drum shaft
- Frictionless bearings

Gear System

- 286:1 total reduction
- Self-Locking hardened steel worm and forged bronze worm gear holds load in position when stopped

Power

Universal 18,500 RPM (No Load),
Reversible, 1.25 HP Single Phase Brake
Motor

15' Power cord plugs into any 115V AC
grounded outlet

6 AMP- No load

14 AMP- Full Load

Speeds

59 RPM: No load drum speed

30 FPM: No load drum speed

25 FPM : 500 Lb – Single line lift

20 FPM: 1000 Lb – Single line lift

10 FPM: 2000 Lb – Double line lift

Duty Cycle

- 25%: 15 Min/Hr when operating at full load

Drum Storage – per Drum

1/8" - 1000 ft. 3/16" - 450 ft.

1/4" - 250 ft. 5/16" - 150 ft.

Cable capacities are based on a smooth, even wrap. Best results are obtained when a minimum amount of cable is used to satisfy the particular job requirements. Maintain no less than 4 wraps of cable on the drum at all times.

Cable is sold separately.

Cable Strength

Model 600AB is priced without cable. Please specify cable length and diameter based on the following chart. Safe working load is 20% of breaking strength.

Dia.	Breaking Strength	Safe Work Load
1/8"	2000 Lb.	400 Lb.
3/16"	4200 Lb.	840 Lb.
1/4"	7000 Lb.	1400 Lb.
5/16"	9800 Lb.	1960 Lb.

Winch-Hoist Lifting Capacity – Single Line

1000 Lbs. 1-3 Layers of 1/4" Cable (Up to 50')

850 Lbs. 4-6 Layers of 1/4" Cable (50'-150')

600 Lbs. 7-9 Layers of 1/4" Cable (150'-250')

Pulling Capacity – Rolling Load

My-te Winch-Hoists are rated at the vertical lifting capacity. The chart below represents the weight of a rolling load that may be pulled up a given incline. This chart is for reference only. All capacities are reduced to allow for nominal friction factors.

Incline	Max Load Wt.
10% - (6°)	8000 Lb.
20% - (11°)	4000 Lb.
40% - (22°)	2100 Lb.
60% - (31°)	1500 Lb.
80% - (39°)	1300 Lb.
100% - (45°)	1100 Lb.

Lifting and pulling capacities for the model 600AB are based on the total load applied to the winch-hoist. For best results, the load must be evenly distributed between the two drums.

Shipping Weight (8' Drum Centers)

295 Lb.

Available Options/Accessories

208 VAC Single Phase Motor

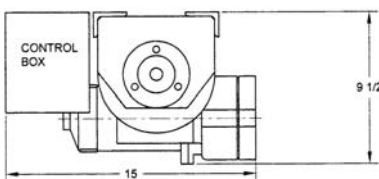
Upper/Lower Limit Switches

Upper Limit Switch Only

Keyed Wall Switches

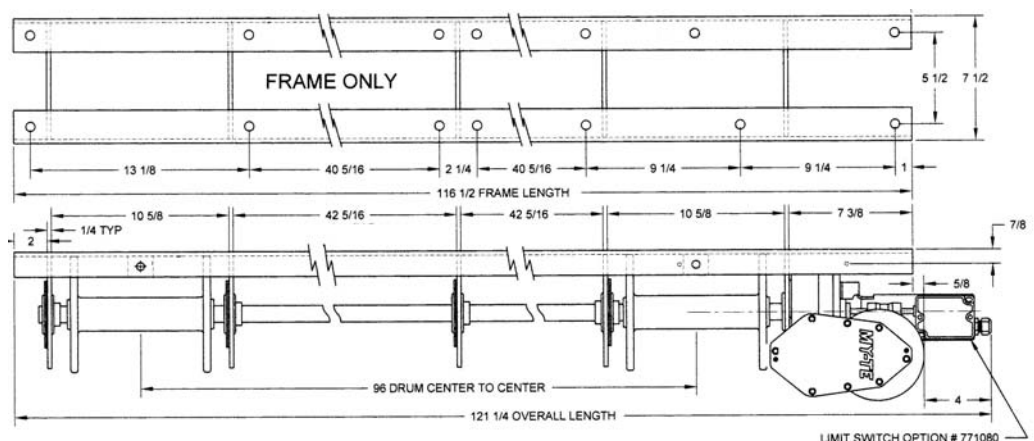
Upside Down Mounting

Wire Rope, Hooks, Slings



600AB/Upside Down Mount
End View

All My-te Winch-Hoists are designed for material handling only.



600AB/Upside Down Mount – 96" Drum Centers (typ.)