

**Features**

- Trifecta system 115 Volt brake motor with triple brake system for instant stopping
- Worm & worm gear drive for positive load holding
- Single phase motor
- Grooved drums for 1/4" cable
- Low voltage 10' pendant control
- Many available options

**Applications**

*All My-te winches and hoists are designed for material handling usage only.*

Handle rolling loads up to 20,000 lbs

Move carts in and out of production areas

Pull trailers through assembly stations

Pull tarps or covers over tanks and pits

Full power forward and reverse



**Construction Features:**

- Heavy-duty angle base drilled for six 1/2" mounting bolts
- Installation requires no welding
- Fully sealed aluminum gear housings with precision-cut gears running in an oil bath
- Hardened steel worm and forged bronze worm gear holds load in position when stopped
- Stress-proof drum shafts
- Frictionless bearings
- 286:1 gear reduction

**Power:**

- Universal 18,500 RPM reversible  
1.25 HP brake motor (no-load speed)
- 15' power cord plugs into any  
115 Volt AC grounded outlet
- 6 amp – No load
- 14 amp – Full load

**Pulling Capacity:**

- 20,000-lb rolling load capacity
- 800-lb line pull
- Rolling load capacity is dependent on floor surface and wheel/caster condition

**Speeds:**

- 59 RPM: no-load drum speed
- 37 FPM: 10,000-lb rolling load
- 31 FPM: 20,000-lb rolling load

**Cable Drums:**

- Two welded steel cable drums grooved for 1/4" cable
- Lower drum is gear driven
- Upper drum not powered

**Cable Strength:**

- Recommended 1/4" diameter cable has 7,000-lb breaking strength
- Safe working load: 1,400-lb line pull

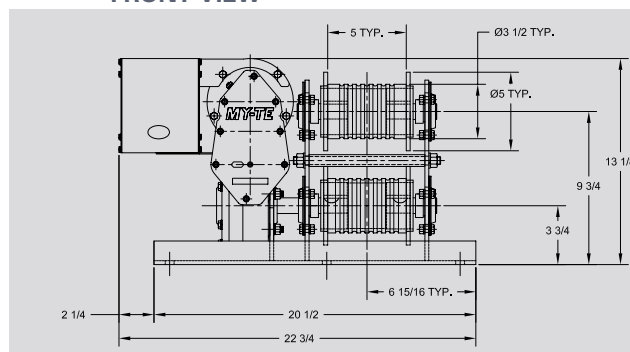
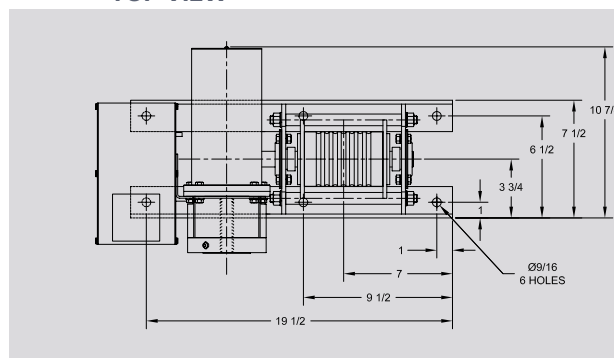
**Duty Cycle:**

- 25%—15 min/hour

**Shipping Weight:** 102 lbs**Available Factory Options:**

- 208 Volt single phase motor
- Freewheeling clutch
- Limit switch
- Emergency hand crank
- Variable speed control
- Radio remote control
- High speed gears

*For custom design and application assistance of a My-te winch-hoist, see your My-te distributor or call My-te Products, Inc. (800) 840-9880. Visit us at [www.myte.com](http://www.myte.com)*

**FRONT VIEW****TOP VIEW****SIDE VIEW**